



Chilliwack Pickleball Club

November 2022 Newsletter



>Welcome!

Welcome to the November 2022 Newsletter

Welcome to all the new and current club members to the November Newsletter. Our club membership continues to grow, we are over 450 members and growing. The Board welcomes you all whether you are new or been with the club from the beginning.

A growing club brings about many challenges, we appreciate your support and patience as we grow together as a community. Our collective challenge is to retain the past successes with the new challenges we face. Hang on to your paddles as we grow the game in our club and Chilliwack together. Spoiler alert, mistakes may occur. Remember we are all volunteers in this pickleball adventure. 😊

More importantly, on November 11th Lest we Forget, honour our current and past heroes.

Communications



The monthly newsletter is only one avenue to keep members informed about the goings on that occur during the month. Carol Hart our Club Events Coordinator, and Lyle Simpson our Club President provide current emails to all members via the host Pickleball Canada (PCO). You will receive these emails on your personal email account or you can view them the PCO site once you have signed in, check the messaging centre.

In this digital age, we all have needed to be more technologically competent to function. It is interesting to discover how technologically challenged we all are.

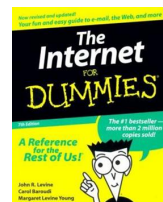
I encourage you to explore the sites and play around with the different links.

Like learning pickleball, it takes a lot of patience. Some more than others, above all don't be afraid. Please feel free ask the hosts for help at the club when playing at the Landing. Warning, consumption of alcohol may or may not work, but it may or may not hurt either.

Websites links to bookmark:



- [Chilliwack Pickleball Club](#)
- [Pickleballbrackets](#)
- [Pickleball BC](#)
- [Pickleball Canada](#)
- [Chilliwack Pickleball Club Facebook Page](#)





Chilliwack Pickleball Club



November 2022 Newsletter

The Newsletter

Please provide feedback and suggestions as we continue to produce and publish the monthly newsletter. The goal is to make it informative, something you take the time to look over. As such we will be looking at different formats, and topics to produce. We will attempt not to duplicate too much information that has already been communicated. However, if you are like most of us subtle and not so subtle reminders maybe necessary. Not always appreciated but sometimes necessary, anyone with a partner or spouse knows that.

There will be an attempt to be Informative, creative, and somewhat entertaining. There are obvious limitations in that department. It is not a professional publication only a group of volunteers obligated to put something out each month. You are welcome to submit articles, ideas, and suggestions. Of course, no guarantees it gets past the editorial board, but it might.

“So you’re tellin’ me there’s a chance?”



Yes Lloyd, just send your ideas, suggestions, and comments to:

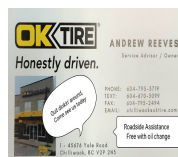
Publicrelations@chillbc.com

Future topics or features may include, FAQ’s, personal stories, requested news items, specials delving into ratings, rankings, exploring club policy, structure, procedures, Chillpb, and global pickleball news.

Newsletter items, but first a Thanks to our Advertising Sponsors

We want to acknowledge and thank all our advertising sponsors who support the club and the tournaments that we run. If you have a business or know of sponsorship possibilities you can contact Tim Alsop our Director of Advertising. Every month we would like to highlight a sponsor on their behalf.

This month, we would like to thank **OK TIRE**, and remind our membership to look for tires and mechanical needs for this cold and rainy season. OK TIRE can help you out. [Contact Andrew and his Sons at OK TIRE!](#)





Chilliwack Pickleball Club

November 2022 Newsletter



Club Sponsors



EQUIPMENT: BIG AND SMALL WE GOT IT ALL!
From our Bobcat that can navigate tight properties to our 330 excavator, we have the equipment to transform your property.

604-819-8505

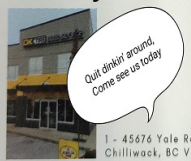
info@barrysbulldozingltd.ca



ANDREW REEVES

Service Advisor / Owner

Honestly driven.



Quit dinking around
Come see us today

PHONE: 604-795-3719
TEXT: 604-670-3099
FAX: 604-795-2494
EMAIL: chilliwackoktire.com

Roadside Assistance
Free with oil change

1 - 45674 Yale Road
Chilliwack, BC V2P 2N3



November News Items

As November arrives there is a changing of the seasons in the air. As we navigated through the Covid mandated restriction season of a year ago, we now enter the rainy filled fall and winter seasons. With the returning rains come the returning outdoor pickleball players. Although there will be a fair number of members who will travel and be away this season, we expect the Landing to be full on a regular basis. It will be imperative that you register your intent to play through Pickleballbrackets. Drop in players will be turned away. ☹️ Instructions are located on the Chillpb website under the additional document section.

New Playing Format

The club is implementing a new playing format in an effort to provide members more opportunities to participate in the club rating and ranking system. Carol Hart sent out an email on Oct. 26th explaining the format and process to sign up. In short, there are two categories Competitive and Social play.

The Competitive play involves playing one round robin at your assigned net. Scores will be recorded in Pickleballbrackets for individual club ratings and club member rankings except when there are players in the group with a greater that a .5 rating difference.

Social play will be initially organized on nets but players are free to play anywhere on the social play nets without keeping a record of scores.

Additional playing formats will be included, you can check the different types of play on the November play schedule that is attached to this newsletter.

Calendar Notes

- Firstly, please note the cancellation dates.
- For the month of November all Saturday sessions will be held at First Avenue Church which has more limited playing capacity.
- Any player curious about singles play can get experience by signing up to new Half Court Singles playing sessions info attached



Chilliwack Pickleball Club



November 2022 Newsletter

Club Sponsors



Dr. Harjot Dhillon, BHK., BSc., D.C

Chiropractor

ph. 604.792.9981
fax. 604.792.6852
email. DrDhillon@theapolloclinic.ca



#2-45844 Yale Road
Chilliwack, BC V2P 2N8



Keith Graham

Marcom Signs and Graphics
1-44322 Yale Road West
Chilliwack, BC, V2R 4H1

t: 604 795 4005
e: keith@marcomsignsandgraphics.ca
w: www.marcomsignsandgraphics.ca

Winter Tournament

With a successful tournament under our belts the next tournament our club is hosting will be from December 27th to 29th. If you are deciding to play, don't wait too long, the tournament is nearly half full after just a few weeks of posting.

Volunteers Needed

We all know it takes a village to raise a child, well it takes an entire club to run a tournament. The vision of the club is to involve members in all facets of the club through volunteer opportunities. All members new, or seasoned are encouraged to help in running our tournaments. No previous experience necessary. We had 39 members and several non-members contribute time during the tournament. That's not including all the Board Members who ran and managed the event hours before and after the start and finish of the tournament. Truly a big win for club, players, and volunteers. You can contact Cathie Sessions our Director of Volunteers to volunteer, more info come.

****New** Junior Program**

The Club is excited to start the Junior Program for players 8 years of age or older. If you have children or know of children who you think would love the game sign them up and spread the news.

Junior Pickleball Lessons (8yrs & Over)

Why should kids play Pickleball?

- * Fun, exciting and easy to learn.
- * Stay active while having a good time.
- * A sport for life that all ages can play.
- * Affordable (all equipment will be supplied).

Where: Chilliwack Sports Landing Centre

Session 1: Monday Jan 9th - Feb 13th, 3.30pm - 5.30pm

Session 2: Monday Feb 27th- Mar 27th, 3.30- 5.30pm

Cost: Session 1 - \$50/ Session 2 - \$45

To Register email treasurer@chillpb.com



Chilliwack Pickleball Club



November 2022 Newsletter



April Graham B.Sc (Hons) Physiotherapy
Physiotherapist
Office 604-426-0516 ext. 130123
agraham@cbihealth.ca

Bote Miedema, CFP®
Financial Advisor

RAYMOND JAMES™

Raymond James Ltd.
Independent Financial Services
Suite 201 - 2190 West Railway Street
Abbotsford, BC, Canada V2S 2E2
T: 604.851.4295 • F: 604.850.8656
Toll Free: 1.877.850.8680
bote.miedema@raymondjames.ca



Club Philanthropy

Hey, here is something to cheer you up amongst the not so always happy news out there. Thank you to all our members who donated gifts and lottery tickets as draw prizes for the Fall Tournament. Sheila Armstrong, reports that we were able to raise \$1,091 to donate to the Senior's Resources Christmas Fund. Well Done everyone.



Club Adopt a Family Christmas Fundraiser

We are starting our annual adopt a family Christmas Fundraiser this year by supporting two families from two elementary schools in Chilliwack. We know that there are some lesser fortunate families in our Community that could use a blessing and good cheer from some of us who are more fortunate. It is what we do at the Club.

Our goal is to duplicate your generosity of last years funding by supporting two families with Christmas hampers and to provide an additional \$500 to the two school's breakfast program.

Donations can be made either by etransfer pay@chillpb.com or donate money to the host of the day. Money is best donated by the end of November or first week of December at the latest so that shopping gets done and hampers get delivered before Christmas.

NCCP Training Opportunities

The club is hosting the National Coaching Certification Program for those players who would like to delve into the realm of teaching or coaching.

Level 1 will take place on Feb.20th at the Landing

Level 2 will take place on Feb 18th and 19th at Evergreen Hall


See Lyle Simpson for Details



Chilliwack Pickleball Club

November 2022 Newsletter



I know too long, so much material. Almost done... 

Reminders

- Please only arrive 15 mins prior to the scheduled play time, we are not permitted to be on the floor and playing prior to our start time. Please cooperate with the Hosts on the day.
- Playing at Portage has been a bit controversial over the last year and has not cooled down. Courts have been vandalized and member's cars have been vandalized while playing there. Although they are public courts, many of our members play there. Neighbours have been confronting city officials and at times players playing there. It is helpful if you are playing at Portage to begin play no earlier than 9 am to minimize any potential aggravation to the surrounding neighbours.



October Highlights

- Positive Civic results, there were a number of Chilliwack Councilors that were reelected who are supportive of the club's plans to build and run our own facility. Cross all your fingers.
- Fall Tournament was a great success thanks to the Tournament Committee and all the volunteers
 - [Facebook pictures](#)
- President's Invitational was enjoyed by all who played, results and pictures can be seen on the Chilliwack Pickleball Facebook page
- Thanks again to Lyle and his team of volunteers putting on three days of introducing pickleball to about 16 Elder College students.
- Chilliwack Progress article on the Fall Tournament, October 28 E edition
 - [Passion for Pickleball](#)

Sheila Armstrong Photos





Chilliwack Pickleball Club

November 2022 Newsletter



Attachments

Chilliwack Pickleball Club Winter Tournament Registration Now Open Events for Everyone



Registration now open for our Winter Tournament. Events for everyone including Men & Women's Scramble (No Partner Needed), Men & Women's Set Doubles and Mixed Doubles.

Don't Miss out on the fun!!!

We will be running the following events:-

Women's & Men's Set Skills Doubles; 2.5, 3.0, 3.5, 4.0 & 4.5 & Over

Mixed Set Skills Doubles; 2.5, 3.0, 3.5, 4.0, 4.5 & Over

Women's & Men's Scramble (No Partner Needed) 2.5, 3.0, 3.5, 4.0 & Over

The Tournament Director may have to pool or split some of the skills divisions depending on registration.

Where: The Landing

When: Dec 27th, 28th & 29th

Times: TBA once registrations are finalised.

Cost: Early Bird - \$40 Registration plus \$15 for each event. (Club Members \$35 registration plus \$15 for each event.

After Dec 1st: \$50 for the First Event and \$15 for each additional
Registration Now Open on www.pickleballbrackets.com

Half Court Singles

This is so much fun. Enjoy the game of singles without having to cover the entire court. This is a social session and can be enjoyed by all. Play will be structured as a round robin so you get a chance to play against as many players as possible.

When: Mon November 7th, 14th, 21st, 28th.

Cost: Normal Fob in.

15 Players max so OPT IN quickly.

(Opt In one week in advance)

Registration is on Pickleball Brackets.



Sheila Armstrong Photos



Chilliwack Pickleball Club

November 2022 Newsletter



NOVEMBER 2022

SUN	MON	TUE	WED	THU	FRI	SAT
			01	02	03	04
		12.30-2.30pm Skills & Drills & Rec Social Play	10.30-1.00pm Competitive & Rec Social Play	12.30-2.30pm Women's Competitive & Rec Social Play	Cancelled	9.00-11.00am 2.99 & Under Mixer 11.15-1.15pm 3.0 & Over Mixer First Ave Church
	06	07	08	09	10	11
Cancelled	10.30-1.00pm Competitive & Rec Social Play 1.00-3.00pm Half Court Singles	12.30-2.30pm Skills & Drills & Rec Social Play	10.30-1.00pm Competitive & Rec Social Play	12.30-2.30pm Men's Competitive & Rec Social Play	12.15-2.45pm Competitive & Rec Social Play. 2.45-5.15pm Book Your Own Court	9.00-11.00am 2.99 & Under Mixer 11.15-1.15pm 3.0 & Over Mixer First Ave Church
	13	14	15	16	17	18
7.45-9.45am Rec Social Play	10.30-1.00pm Competitive & Rec Social Play 1.00-3.00pm Half Court Singles	12.30-2.30pm Skills & Drills & Rec Social Play	10.30-1.00pm Competitive & Rec Social Play	12.30-2.30pm Women's Competitive & Rec Social Play	Cancelled	9.00-11.00am 2.99 & Under Mixer 11.15-1.15pm 3.0 & Over Mixer First Ave Church
	20	21	22	23	24	25
Cancelled	10.30-1.00pm Competitive & Rec Social Play 1.00-3.00pm Half Court Singles	12.30-2.30pm Skills & Drills & Rec Social Play	10.30-1.00pm Competitive & Rec Social Play	12.30-2.30pm Men's Competitive & Rec Social Play	12.30-2.30pm Competitive & Rec Social Play.	9.00-11.00am 2.99 & Under Mixer 11.15-1.15pm 3.0 & Over Mixer First Ave Church
	27	28	29	30		
Cancelled	10.30-1.00pm Competitive & Rec Social Play 1.00-3.00pm Half Court Singles	12.30-2.30pm Skills & Drills & Rec Social Play	10.30-1.00pm Competitive & Rec Social Play			