

BOLE X-COUNTRY CLASSIC

Wednesday, October 8th, 2025

William F. Lede Park

Leduc, Ab

West of the K9 Dog Park

Overflow parking lot is just North of Leduc Rec Centre

Please see Attached Map

COURSE WALKTHROUGH – 4:00pm			
U10 – WOMEN	2016 or LATER	1000m	4:30pm
U10 – MEN	2016 or LATER	1000m	4:38pm
U12 – WOMEN	2014-2015	1000m	4:46pm
U12 – MEN	2014-2015	1000m	4:54pm
U14 – WOMEN	2012-2013	2000M	5:05pm
U14 – MEN	2012-2013	2000M	5:15pm
U16 – WOMEN	2010-2011	3000M	5:25pm
U16 – MEN	2010-2011	4000M	5:35pm
U18/OPEN/MASTERS WOMEN	2008 or EARLIER	5000M	5:45pm
U18/OPEN/MASTERS MEN	2008 or EARLIER	6000M	5:55pm

Please note that times are approximate. Ensure you are ready to run 30 minutes before your scheduled time. Race order will be listed as above.

AWARDS
Medals to 1 st , 2 nd , 3 rd and ribbons 4-10, plus participant ribbons for all age groups up to bantam. Team awards for the first 3 teams will be presented for each category. Teams must consist of 4 members, top 4 times to count. Clubs/Schools may have multiple teams.

COST
\$15 / competitor Processing Fee will be applied to each competitor registration

ENTRIES/DEADLINE
Sunday, October 5th @Noon
All entries to be completed via Trackie: https://www.trackie.com/register/bole-x-country-classic/1031306/

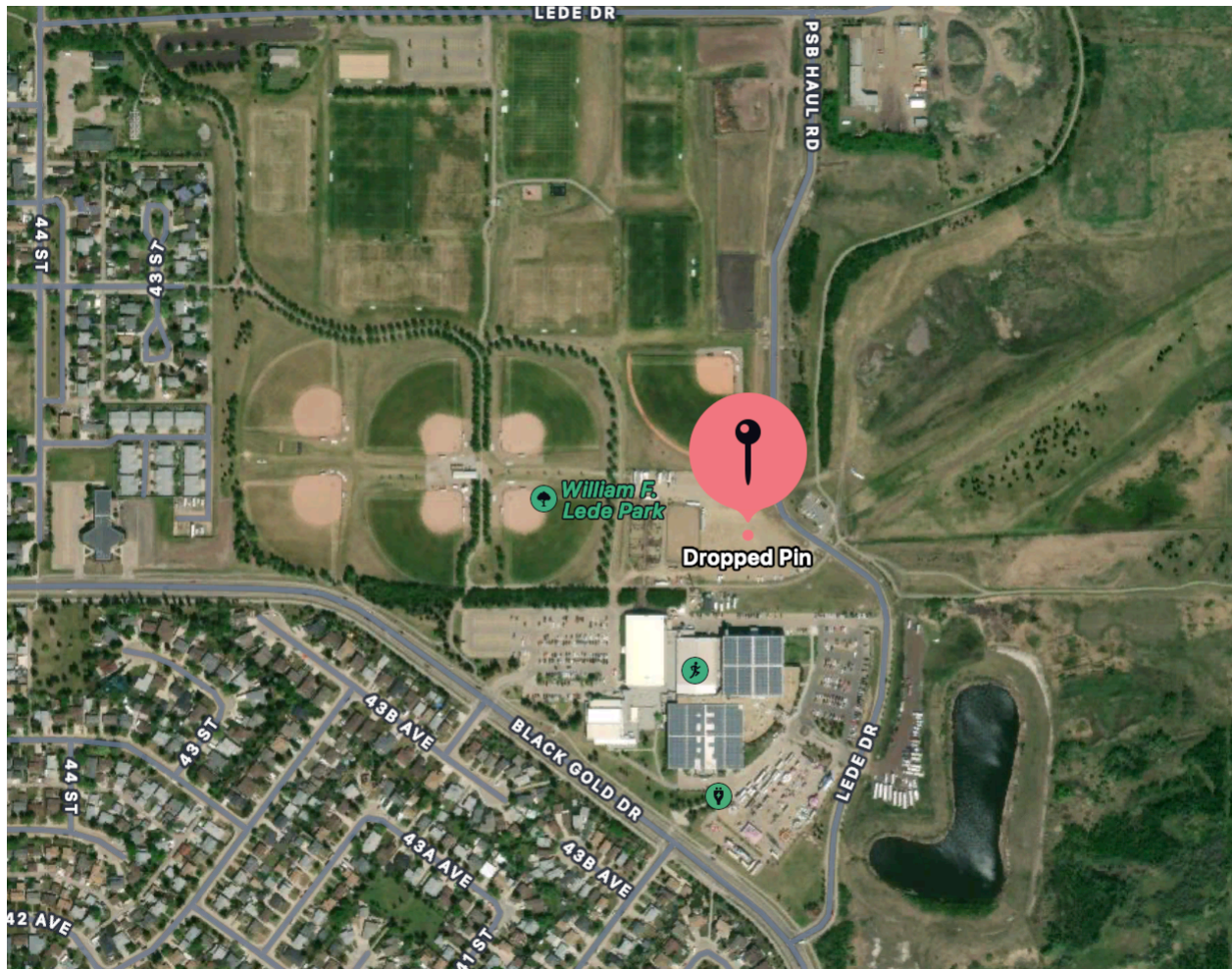
All athletes will be provided a race sticker with all applicable information. Race packages will be available for pick-up at the registration table.

Location

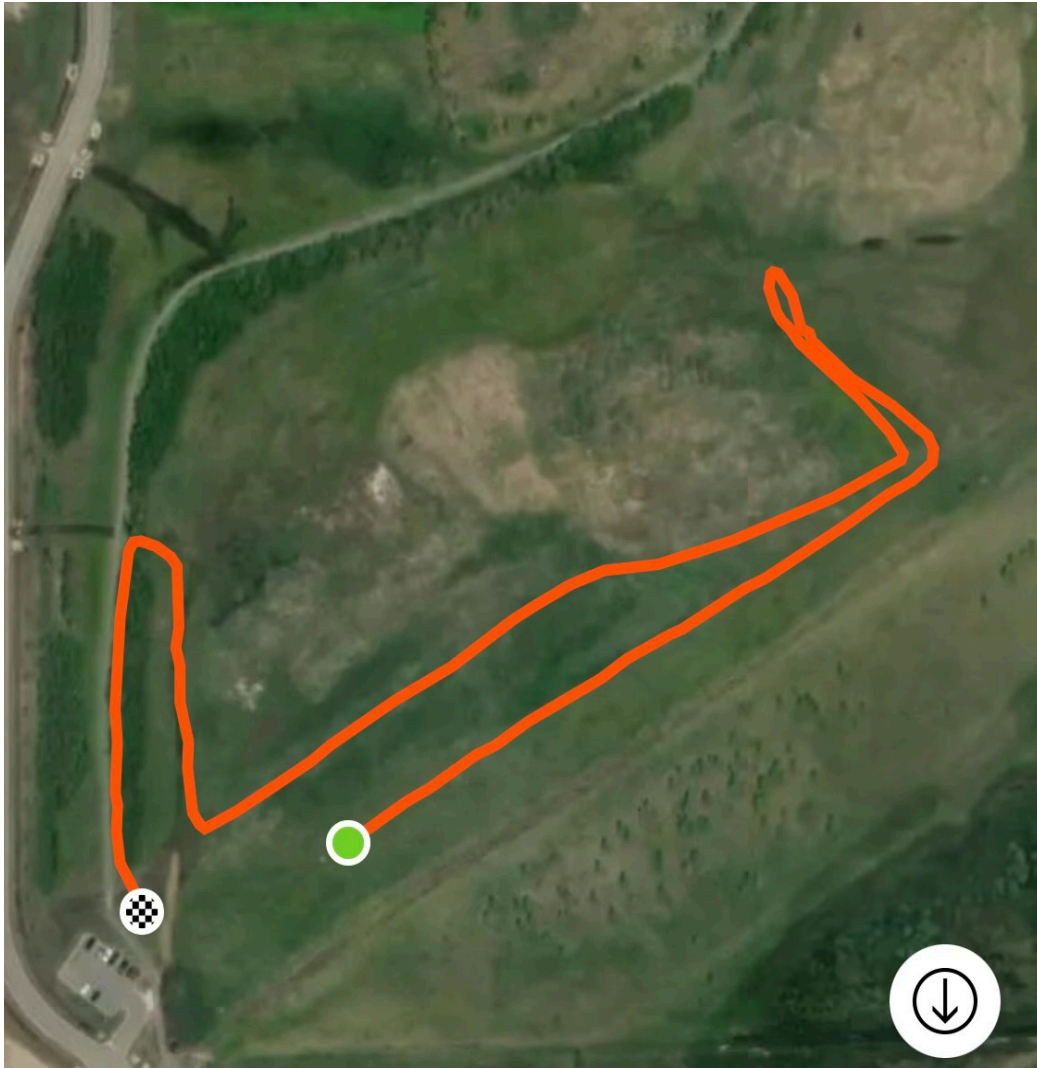
William F. Lede Park

West of the K9 Dog Park

Parking lot is just north of Leduc Rec Centre



1 Km Loop



2 Km Loop

