

# **BOLE X-COUNTRY CLASSIC**

**Thursday, October 10th, 2024**

**NEW LOCATION!!!!**

**William F. Lede Park**

**Leduc, Ab**

**West of the K9 Dog Park**

**Overflow parking lot is just North of Leduc Rec Centre**

**Please see Attached Map**

COURSE WALKTHROUGH – 4:00pm			
U10 – WOMEN	2015 or LATER	1000m	4:30pm
U10 – MEN	2015 or LATER	1000m	4:38pm
U12 – WOMEN	2014-2013	1000m	4:46pm
U12 – MEN	2014-2013	1000m	4:54pm
U14 – WOMEN	2012-2011	2000M	5:05pm
U14 – MEN	2012-2011	2000M	5:15pm
U16 – WOMEN	2010-2009	3000M	5:25pm
U16 – MEN	2010-2009	4000M	5:35pm
U18/OPEN/MASTERS WOMEN	2008 or EARLIER	5000M	5:45pm
U18/OPEN/MASTERS MEN	2008 or EARLIER	6000M	5:55pm

**Please note that times are approximate. Ensure you are ready to run 30 minutes before your scheduled time. Race order will be listed as above.**

<b>AWARDS</b>
---------------

Medals to 1 <sup>st</sup> , 2 <sup>nd</sup> , 3 <sup>rd</sup> and ribbons 4-10, plus participant ribbons for all age groups up to bantam. Team awards for the first 3 teams will be presented for each category. Teams must consist of 4 members, top 4 times to count. Clubs/Schools may have multiple teams.
--

<b>COST</b>
-------------

\$15 / competitor Processing Fee will be applied to each competitor registration
---

<b>ENTRIES/DEADLINE</b>
-------------------------

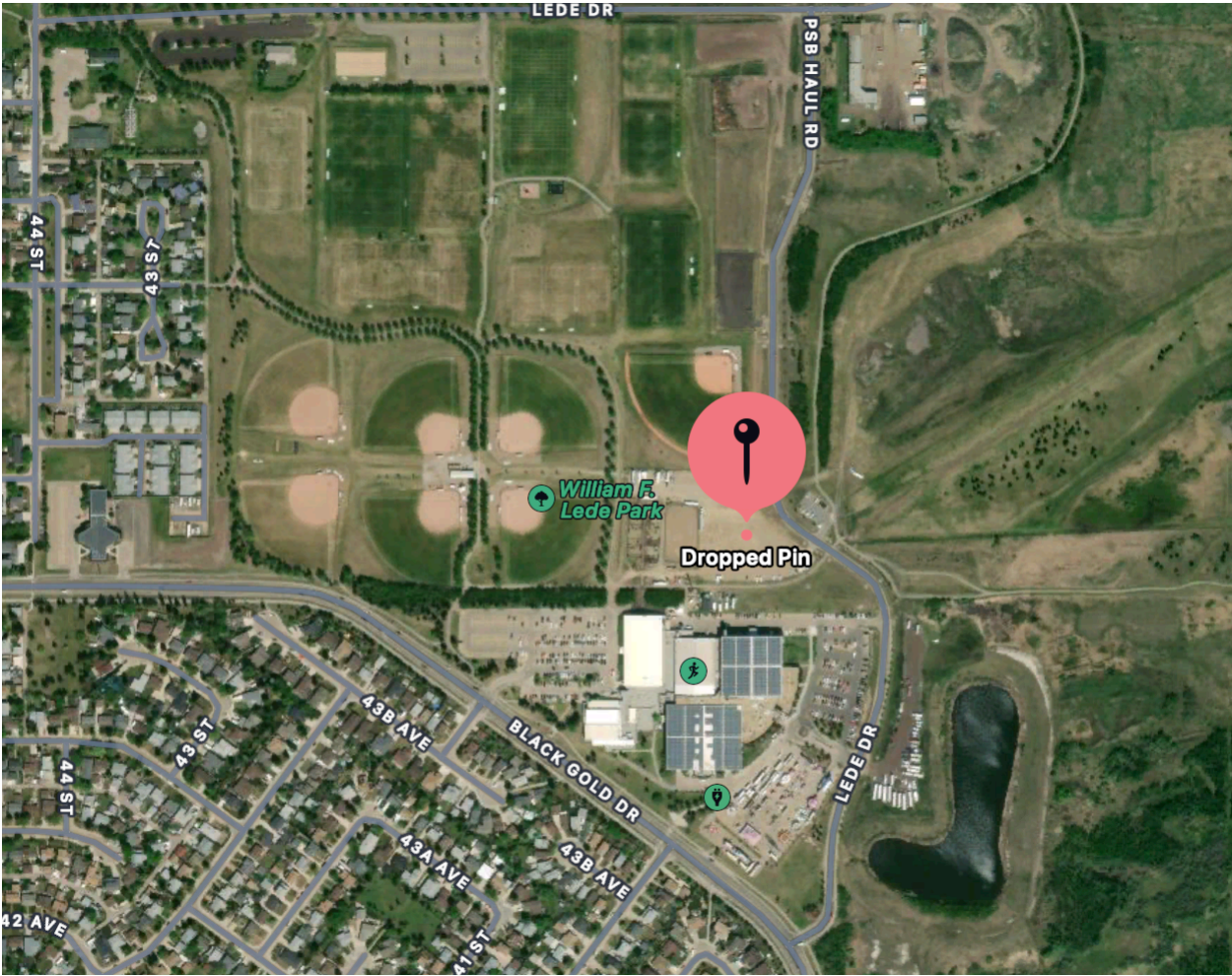
Sunday, October 6th @ Midnight
--------------------------------

All entries to be completed via Trackie: <a href="https://www.trackie.com/event/bole-classic/1016765/">https://www.trackie.com/event/bole-classic/1016765/</a>
--

**All athletes will be provided a race sticker with all applicable information. Race packages will be available for pick-up at the registration table.**

**Location**

William F. Lede Park  
West of the K9 Dog Park  
Parking lot is just north of Leduc Rec Centre



1 Km Loop



2 Km Loop

