

# PACIFIC INTERNATIONAL

# 2019

# Judo Tournament MARCH 16 & 17

U14 U16 U18 U21  
SENIORS KATA PETIT SAMURAI  
U14 TEAM **NEW** NE WAZA



RICHMOND OLYMPIC OVAL



## WEBSITE

[judobc.ca/pacific-international](http://judobc.ca/pacific-international)

## EMAIL

[pacintjudo@shaw.ca](mailto:pacintjudo@shaw.ca)



EXECUTIVE  
AIRPORT PLAZA  
HOTEL & CONFERENCE CENTRE  
RICHMOND VANCOUVER BC



RICHMOND  
SPORT  
HOSTING



IN PARTNERSHIP WITH



## INTRODUCTION

The Steveston Judo Club and Judo BC cordially invite Judokas to participate in the 34th Annual Pacific International Invitational Judo Tournament. We are expecting 20 members from the All Japan University Team.

This tournament is a Judo Canada Regional Points Tournament and a selection tournament for BC athletes wishing to participate in the 2019 Canadian Open Nationals.

## TOURNAMENT COMMITTEE

### **Tournament Director**

Al Sakai, [stevestonjudo@shaw.ca](mailto:stevestonjudo@shaw.ca)

### **JBC Tournament Official/Representative**

Katie Thomson, [executivedirector@judobc.ca](mailto:executivedirector@judobc.ca)

### **Tournament Registrar**

Lorna Nakajima, [lorna.nakajima@gmail.com](mailto:lorna.nakajima@gmail.com)

## COMPETITION DATES AND SCHEDULE

### **Saturday, March 16, 2019**

U14, U18, U21 and Kata

8:00 am Kata starts & Ne Waza starts

~ 10:00 am weight divisions for U14, U18 & U21 (except U21 -44kg and -55kg)

### **Sunday, March 17, 2019**

U16, Intermediate, Seniors & U21 -55kg males & -44kg females & U14 Team Competition

9:00 am start for U14 Team Competition, U16, Intermediate and Senior to follow

Please note athletes can only compete in one category per day, unless the 2<sup>nd</sup> category is Kata or Ne Waza.

## COMPETITION SITE

### **Richmond Olympic Oval**

<http://richmondoval.ca/>

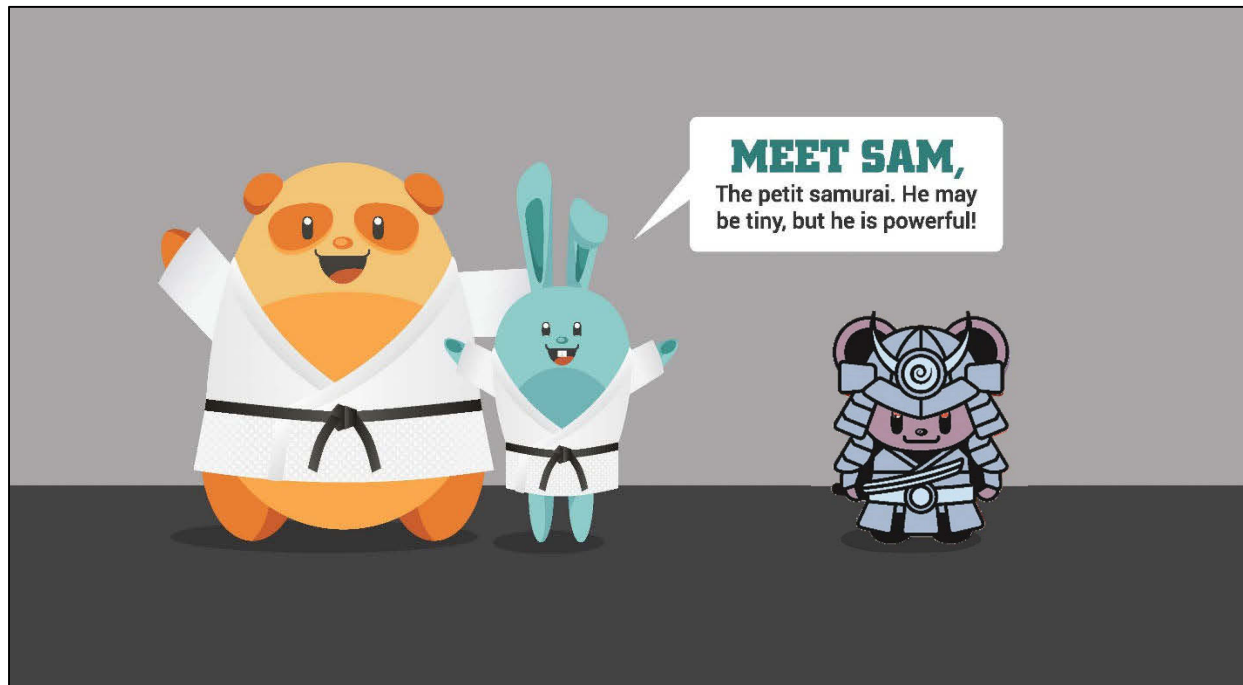
## ELIGIBILITY

All participants must be a member of a provincial judo association, of Judo Canada or of an association recognized by the IJF. Proof of valid membership and photo ID will be required at weigh-in.

## PETIT SAMURAI JUDO EXPERIENCE

**Saturday, March 16<sup>th</sup>** 1 to 2 pm

Young judokas can hit the big mats at the Oval for this fun and informative judo session. Participants receive a certificate and patch. This is a free Judo BC event for all Judo Canada registered judokas ages 6 to 12 years. Registration will be done onsite starting at 12 noon on March 16<sup>rd</sup>. Participants should wear their judogi and bring their Judo Canada cards.



## WEIGH-IN & ACCREDITATION @ RICHMOND OLYMPIC OVAL

**Friday, March 15**

6:00 – 9:00 pm

7:00 - 9:00 pm

**Saturday, March 16**

4:00 – 7:00 pm

5:00 - 7:00 pm

**U14, U18 & U21**

Unofficial scale available

Official weigh in

**U16, Intermediates & Seniors**

Unofficial scale available

Official weigh in

Athletes are only required to weigh in once. However, if competing on both days, athletes need to check out with weigh in on Saturday afternoon if they will **not** be competing on Sunday.

## RULES

- The current IJF tournament and the Judo Canada rules will be used.
- The rules will be reviewed at the coaches & referee clinic

- Blue & White judogis are mandatory - IJF labelled gi's are not mandatory, but as the Pac is a JC Regional points tournament, athletes must follow the Judo Canada judogi guide lines
- Judo Canada back patch rules will apply
- Arm locks are not permitted for U16 divisions
- No Shime-waza & Kansetsu-waza allowed in the Intermediate Senior Women's division
- Golden Score will be applied for all divisions except U14

## ENTRY FEES & ENTRY DEADLINES

Division	Early Bird Fee	Regular Fee	Late Fee
	January 31 <sup>st</sup>	March 1 <sup>st</sup>	March 9 <sup>th</sup>
U14, U16, U18 and Intermediate	\$55	\$60	\$80
U21 & Seniors	\$65	\$70	\$90
2 <sup>nd</sup> division entered	\$30	\$35	\$45
Kata per pair	\$35	\$40	\$50
2 <sup>nd</sup> Kata per pair	\$15	\$20	\$25
change request – only for athletes who do not make their registration weight*	\$30	\$30	\$30
Petit Samurai Event (register the day of the event)	Free	Free	Free

\*In an effort to keep the tournament on schedule no change requests will be accepted from clubs, parents, coaches or athletes on the day of the tournament.

**All registration must be submitted and paid online at:**

**[www.trackiereg.com/2019PacificInternational](http://www.trackiereg.com/2019PacificInternational)**

**No refunds will be issued after March 9<sup>th</sup> no matter the reason.**

## OUT OF PROVINCE RELEASE FORM & EARLY BLOOMER WAIVERS

A link to a waiver will be sent to the participants (or their parents/guardians) once registration has been submitted online.

## REFEREE & OFFICIALS INFORMATION

### **Pre-shiai Meeting**

8:30am March 16th, Richmond Olympic Oval

## Referee Eligibility

- National C and higher
- National B & C Evaluations

Please pre-register to referee at this event by emailing Ron Kuramoto by Feb 28, 2019 at [referee@judobc.ca](mailto:referee@judobc.ca). *Thank you in advance for your support.*

## Kata Evaluators

Steveston Judo Club would appreciate if certified evaluators from other clubs could help with judging the Kata competition. Please contact [pacintjudo@shaw.ca](mailto:pacintjudo@shaw.ca) if you are able to assist.

## AWARDS

Medals will be awarded for first, second and third place

All medal winners must win at least one match

U14 Team Competition – prizes will be awarded for the 1<sup>st</sup>, 2<sup>nd</sup> and 3<sup>rd</sup> place team.

## DOPING CONTROL

Each participant in the Pacific International is subject to a doping control according to regulations by the Canadian Centre for Ethics in Sport (CCES). Athletes and coaches must be familiar with these regulations. You can access the CCES Policy at: [www.cces.ca](http://www.cces.ca).

## DIVISION INFORMATION

The Tournament Director reserves the right to alter the Intermediate and Ne Waza Men and Women's weight divisions if the numbers in these divisions warrant such changes.

## U14 TEAM COMPETITION

The U14 team competition will feature teams composed of 6 weight classes:

3 Female: -44kg, -52kg & -63kg

3 Male: -46kg, -55kg & -66kg

Please note weigh divisions maybe modified based on weigh division of eligible participants. The IJF Team Competition guidelines will be followed. Registration for the team competition will take place on Sunday morning at the competition site.

DIVISIONS

<b>U14</b>	<p style="text-align: center;"><b>BORN IN 2006 &amp; 2007</b></p> <p style="text-align: center;">MALE (ORANGE, GREEN, BLUE) -34kg, -38kg, -42kg, -46kg, -50kg, -55kg, -60kg, -66kg, +66kg</p> <p style="text-align: center;">FEMALE (ORANGE, GREEN, BLUE) -32kg, -36 kg, -40 kg, -44 kg, -48 kg, -52 kg, -57 kg, -63 kg, +63kg</p>
<b>U16</b>	<p style="text-align: center;"><b>BORN IN 2004 – 2007*</b></p> <p style="text-align: center;">MALE (GREEN, BLUE, BROWN AND BLACK) -38kg, -42kg, -46kg, -50kg, -55kg, -60kg, -66kg, -73kg, +73kg</p> <p style="text-align: center;">FEMALE (GREEN, BLUE, BROWN AND BLACK) -36 kg, -40 kg, -44 kg, -48 kg, -52 kg, -57 kg, -63 kg, -70kg, +70 kg</p>
<b>U18</b>	<p style="text-align: center;"><b>BORN IN 2002 – 2005</b></p> <p style="text-align: center;">MALE (GREEN, BLUE, BROWN AND BLACK) -46kg, -50kg, -55kg, -60kg, -66kg, -73kg, -81kg, -90kg, +90 kg</p> <p style="text-align: center;">FEMALE (GREEN, BLUE, BROWN AND BLACK) -40 kg, -44 kg, -48 kg, -52 kg, -57 kg, -63 kg, -70 kg, +70 kg</p>
<b>U21</b>	<p style="text-align: center;"><b>BORN IN 1999 to 2004</b></p> <p style="text-align: center;">MALE (GREEN, BLUE, BROWN AND BLACK) - 55 kg, -60 kg, -66 kg, -73 kg, -81 kg, -90 kg, -100 kg, +100 kg</p> <p style="text-align: center;">FEMALE (GREEN, BLUE, BROWN AND BLACK) -44 kg, -48 kg, -52 kg, -57 kg, -63 kg, -70 kg, -78 kg, +78 kg</p>
<b>ADULT</b>	<p style="text-align: center;"><b>BORN IN 2004 AND EARLIER</b></p> <p style="text-align: center;">SENIOR MALE (BROWN AND BLACK) INTERMEDIATE MALE (GREEN AND BLUE) -60 kg, -66 kg, -73 kg, -81 kg, -90 kg, -100 kg, +100 kg</p> <p style="text-align: center;">SENIOR FEMALE (BLUE, BROWN AND BLACK) INTERMEDIATE FEMALE (ORANGE AND GREEN) -48 kg, -52 kg, -57 kg, -63 kg, -70 kg, -78 kg, +78 kg</p>
<b>KATA</b>	<p style="text-align: center;">NAGE-NO KATA KATAME-NO KATA JUNO KATA GOSHIN JUTSU-NO KATA KIME-NO-KATA</p>
<b>NE WAZA</b>	<p style="text-align: center;"><b>BORN IN 2001 AND EARLIER</b></p> <p style="text-align: center;">MALE (GREEN, BLUE, BROWN AND BLACK) -73kg, -90kg &amp; +90kg</p> <p style="text-align: center;">FEMALE (GREEN, BLUE, BROWN AND BLACK) -52kg, -70kg &amp; +70kg</p>



## \*EARLY BLOOMER

2006 & 2007 entering U16 who qualify as an “Early Bloomer” must submit the Early Bloomer waiver, meet Judo Canada’s Early Bloomer requirements and have the approval of Judo Canada.

2005 entering U18 who qualify as an “Early Bloomer” must submit the Early Bloomer waiver, meet Judo Canada’s Early Bloomer requirements and have the approval of Judo Canada

## HOST HOTEL

### **Executive Airport Plaza Hotel**

7311 Westminister Highway, RICHMOND, BC V6X 1A3

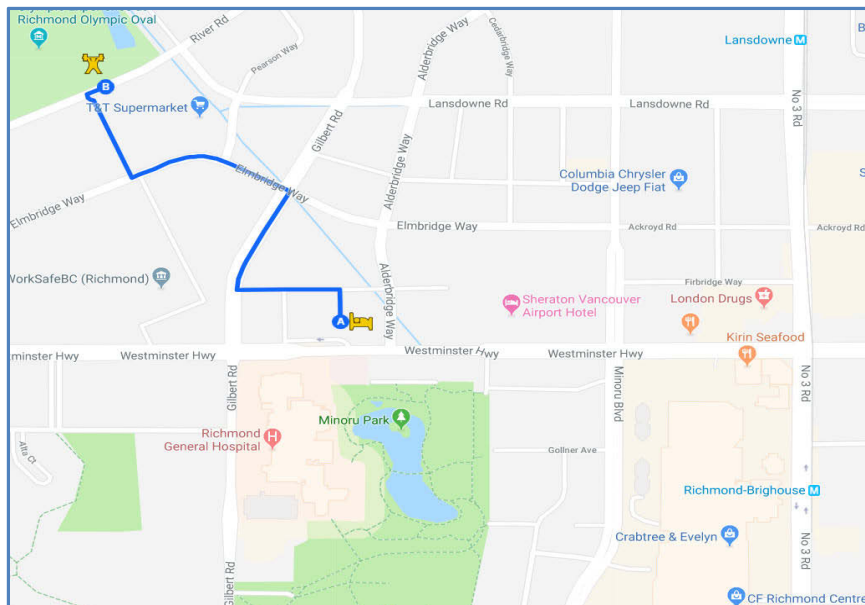
Toll-free: 1-800-663-2878

**Please book no later than February 15th and quote “Pacific International Judo Tournament” to receive the following rates:**

Plaza /Courtyard Room	\$145/night + taxes & fees
One Bedroom Condo Suite	\$169/night + taxes & fees
Two Bedroom Condo Suite	\$199/night + taxes & fess

## AREA

Both the competition venue and host hotel are a short drive from the Vancouver International Airport. The hotel provides a free shuttle and the competition venue and hotel are a 10-minute walk from each other. Also, within walking distance is the Richmond Centre Mall and food fair, lots of restaurants and the rapid transit station to downtown Vancouver.



EVENT SCHEDULE

Time	Friday, March 15	Saturday, March 16		Sunday, March 17	
8 am		<b>Kata Competition &amp; Ne Waza</b> Approx. 8 – 10 am	8:30 am <b>Referee Meeting</b>	<b>U14 Team Competition* &amp; Intermediates**</b> Approximately 8 am to 11 am	
9 am					
10 am					
11 am		Official Opening Ceremonies			
12 pm		Approx. 10:20 am <b>U14 Competition</b>			
1 pm		<b>Petit Samurai</b>			
2 pm		<b>U18 &amp; U21</b>			Unofficial weigh in starting at 4 pm
3 pm					
4 pm			U16 & Senior Accreditation & Official Weigh in starting at 5 pm		
5 pm			Richmond Olympic Oval		
6 pm	Unofficial weigh in starting at 6 pm				
7 pm	U14, U18 & U21 & Accreditation & Official Weigh in starting at 7 pm				
8 pm	Richmond Olympic Oval				
9 pm					

\* Approximate end time

\*\* Approximate start and end times

